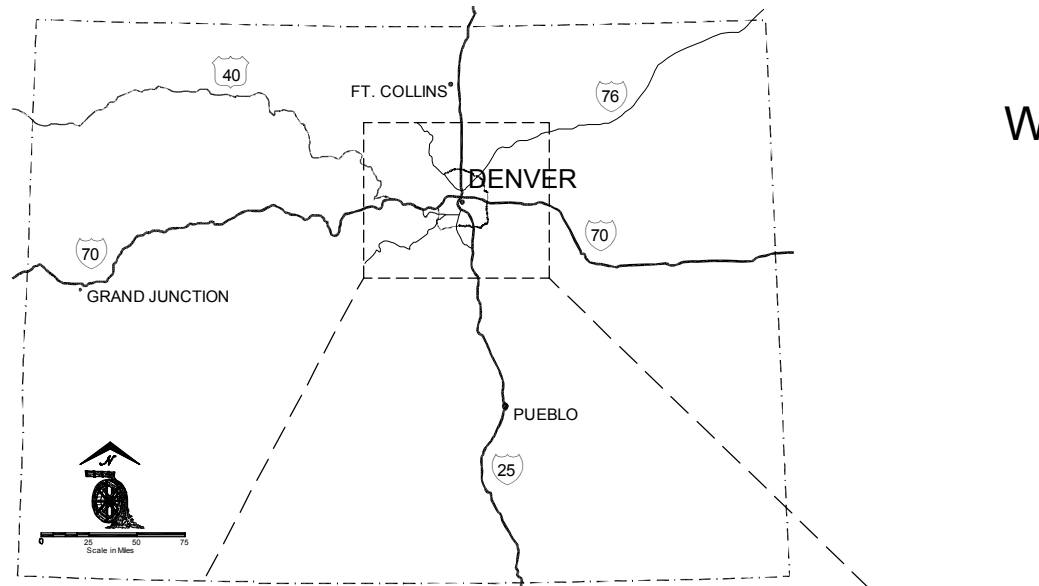


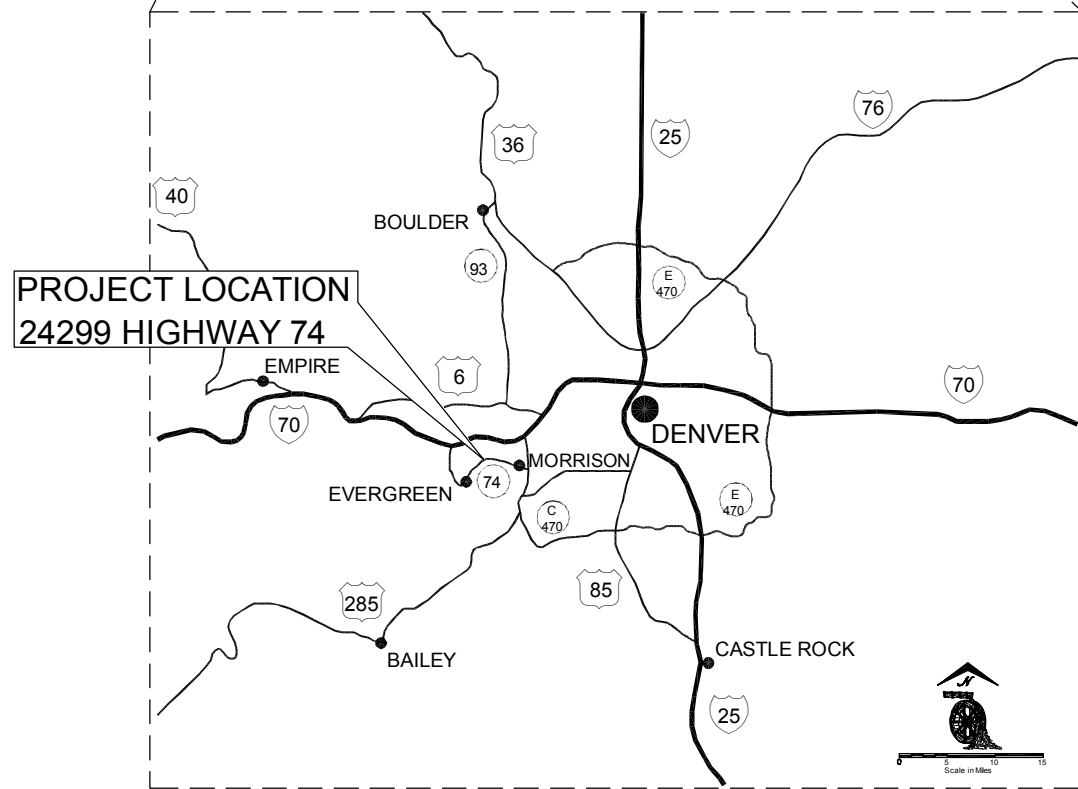
GENESEE DAM NO. 2

WATER DIVISION 1 - WATER DISTRICT 9

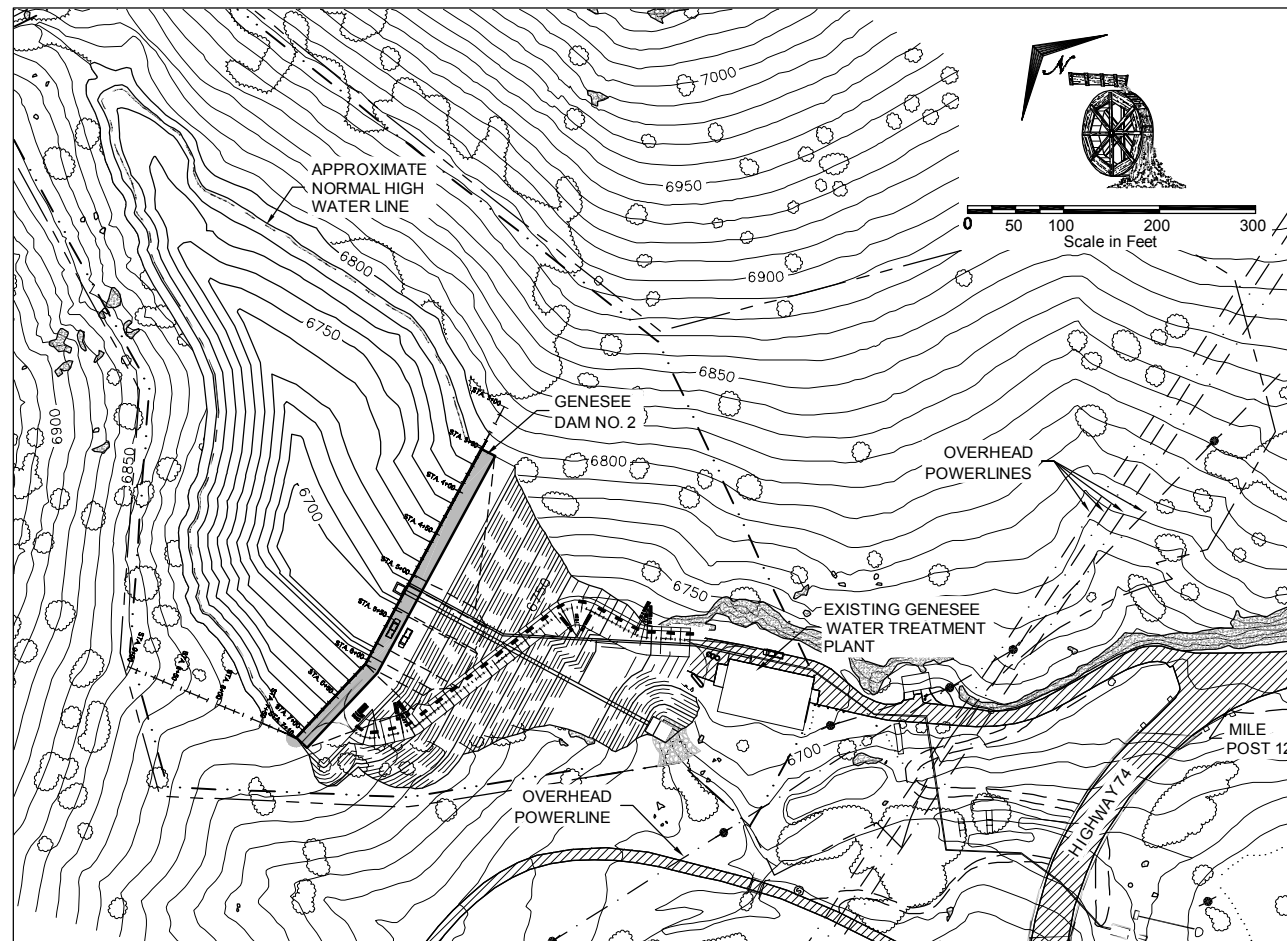
JEFFERSON COUNTY, COLORADO



COLORADO STATE MAP



LOCATION MAP



PROJECT AREA MAP

PREPARED FOR:
GENESEE WATER & SANITATION DISTRICT
 PREPARED BY:
W. W. WHEELER AND ASSOCIATES, INC.
 IN ASSOCIATION WITH:
BASEPOINT DESIGN CORPORATION

Genesee Dam No. 2
 C-1887
 Water Division 1 - Water District 9
 Jefferson County, Colorado

I hereby declare that these plans for the construction of Genesee Dam No. 2 were prepared under my direct supervision.

RESPONSIBLE DESIGN ENGINEER:
 W. W. Wheeler & Associates, Inc.

_____ Colo. PE No. 25028
 Stephen L. Jamieson, P.E.

STATE ENGINEER APPROVAL:
 Approved on the _____ day of _____, 20____.

 State Engineer

By: _____
 Deputy State Engineer

These plans represent the AS-CONSTRUCTED conditions of Genesee Dam No. 2 to the best of our knowledge and judgment, based in part on information furnished by others as of the _____ day of _____, 20____.

_____ Colo. PE No. 25028
 Stephen L. Jamieson, P.E.

NOTE: DRAWING INDEX ON DWG G2

REFERENCE DWGS	DRAWING NO.	REFERENCE

This drawing together with its parent electronic media file is the property of W. W. Wheeler & Associates, unless otherwise excepted, or superseded by written agreement with the client listed in the title block. It is furnished on the express condition that it shall not be reproduced, copied, nor used for any other purpose than for which it is specifically furnished without the prior written consent of said W. W. Wheeler & Associates.

REVISIONS	DATE	MADE BY	CKD. BY	REMARKS
▲	9/30/05	MDS	SLJ	SEO Review Submittal
▲	2/1/06	MDS	SLJ	SEO Approved for Construction
▲	6/16/06	MDS	SLJ	Change Order No. 1 - SEO Submittal
▲	8/30/06	MDS	SLJ	Change Order No. 1 - SEO Approved for Construction
▲				
▲				

File Record	Record	By	Date
ORIGINAL PAPER SIZE: 24" x 36"	Design	MDS	2/1/06
CLOT SCALE: 1:1	Drawn	SAA	2/1/06
GEN SETTINGS: black&white.ctb	Check	SLJ	2/1/06
	Revised	MDS	6/16/06
			/
			/

Genesee Dam No. 2
 near Kittredge, Colorado

Cover Sheet

Sheet 1 of 20

W. W. Wheeler and Associates, Inc.
 Water Resources Engineers

BasePoint Design Corporation
 Civil / Geotechnical Design Services

CLIENT: Genesee Water and Sanitation District

Wheeler Number: _____ DWG: _____

1927

D:\01\64164503\05ChangeOrder\Drawings\dwg\64503-0-00.dwg 10/10/2006 12:03:41 PM Scott, T 2