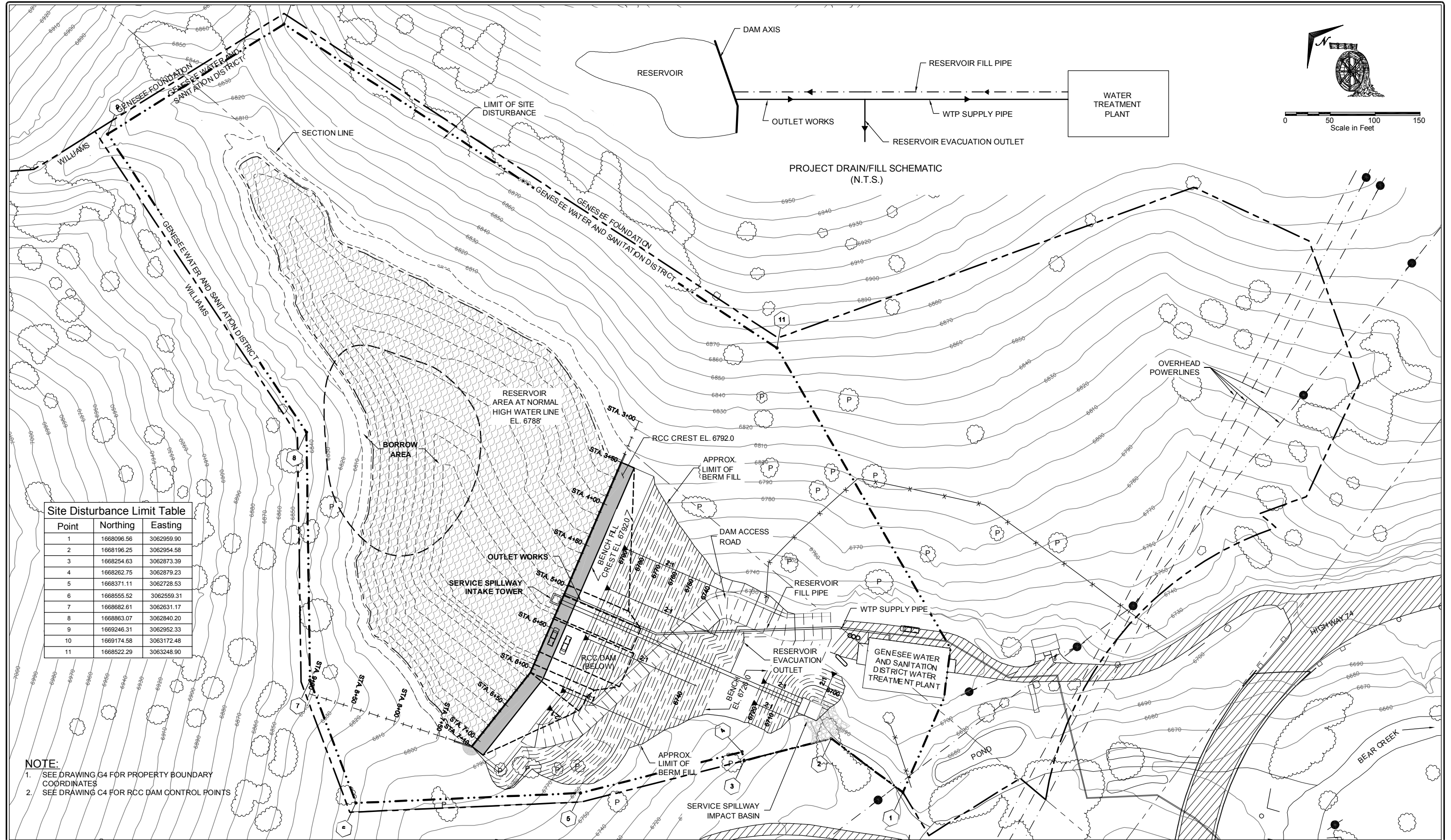


PROJECT DRAIN/FILL SCHEMATIC  
(N.T.S.)



Site Disturbance Limit Table

Point	Northing	Easting
1	1668096.56	3062959.90
2	1668196.25	3062954.58
3	1668254.63	3062873.39
4	1668262.75	3062879.23
5	1668371.11	3062728.53
6	1668555.52	3062559.31
7	1668682.61	3062631.17
8	1668863.07	3062840.20
9	1669246.31	3062952.33
10	1669174.58	3063172.48
11	1668522.29	3063248.90

- NOTE:
- SEE DRAWING G4 FOR PROPERTY BOUNDARY COORDINATES
  - SEE DRAWING C4 FOR RCC DAM CONTROL POINTS

DRAWING NO.	REFERENCE
G4	General - Plan of Existing Conditions
C4	RCC Dam - Plan

This drawing together with its parent electronic media file is the property of W. W. Wheeler & Associates, unless otherwise excepted, or superseded by written agreement with the client listed in the title block. It is furnished on the express condition that it shall not be reproduced, copied, nor used for any other purpose than for which it is specifically furnished without the prior written consent of said W. W. Wheeler & Associates.

REVISIONS	DATE	MADE BY	CKD. BY	REMARKS
1	9/30/05	MDS	SLJ	SEO Review Submittal
2	2/1/06	MDS	SLJ	SEO Approved for Construction
3	6/16/06	MDS	SLJ	Change Order No. 1 - SEO Submittal
4	8/30/06	MDS	SLJ	Change Order No. 1 - SEO Approved for Construction

File Record	Record	By	Date
ORIGINAL PAPER SIZE: 24" x 36"	Design	MDS	2/1/06
CUT SCALE: 1:1	Drawn	SAA	2/1/06
REVISIONS: black & white.ctb	Check	SLJ	2/1/06
	Revised	MDS	6/16/06

Genesee Dam No. 2  
near Kittredge, Colorado

General  
Plan of Modifications  
Sheet 6 of 20

**W. W. Wheeler and Associates, Inc.**  
Water Resources Engineers

**BasePoint Design Corporation**  
Civil / Geotechnical Design Services

CLIENT: Genesee Water and Sanitation District

Wheeler Number: [ ] DWG: [ ] 1997

D:\0116416145403.05\ChangeOrder\Drawings\dwg\_164303-0-06.dwg 10/10/2006 12:06:52 PM Scott, T.J.